



## BENEFITS

### Elegant Simplicity

- Controller-free multi-AP architecture
- 100% Free Cloud Management Service (CloudManager)
- Optional mobile-app management (Harmony)
- Simple wizard-driven configuration
- Dashboard monitoring from any location

### Enterprise Reliability

- Hand-crafted APs from the ground up
- Enterprise-grade feature set not found in traditional SMB APs
- Unlimited scaling and flexibility

### Consumer Affordability

- Affordable enterprise performance
- Free configuration, management & reporting tools
- No AP Licenses required
- No hidden software or hardware requirements
- Automatic free lifetime firmware updates
- One year Limited Hardware Warranty

# Xclaim™ Xi-2

## BUSINESS CLASS WIFI ACCESS POINT

**Dual-Band 2x2 concurrent 802.11n indoor access point with aggregate speed up to 600Mbps and free Cloud Management**

Xclaim access points combine superior functionality, elegant simplicity, and competitive pricing including totally free cloud management for businesses of all sizes. The Xi-2 AP is a dual radio, dual-band concurrent 802.11n indoor AP that provides lightning fast WiFi up to 600Mbps, enabling an all-wireless work environment. The Xi-2 AP is perfect for environments with multiple WiFi enabled devices such as smartphones, tablets, laptops, and WiFi printers. Furthermore, the Xclaim Xi-2 gives you secure WiFi connectivity while providing easy guest access.

# Xclaim™ Xi-2

## BUSINESS-CLASS WI-FI ACCESS POINT

### Business Class Wi-Fi

Xclaim Access Points allow for next generation Wi-Fi for all your business needs including secure, reliable Wi-Fi for your employees and their business data, as well as hotspot access for your guests. Xclaim access points are #Mobile ready to support smartphones, tablets, and traditional Wi-Fi products with fast and reliable Wi-Fi connectivity for any size of network.

### Enterprise Simplicity

This is usually a contradiction in terms – but not with Xclaim. Businesses no longer have to choose between overly complex and expensive enterprise solutions or low functionality consumer grade products. Xclaim is the complete package, combining reliability and simplicity with leading edge business-class Wi-Fi technology. Xclaim has been uniquely developed and positioned to address the Wi-Fi needs of businesses who simply need good quality Wi-Fi which is both easy to set-up and manage as well as being amazingly cost-effective.

### Network Management

You can manage your Xclaim networks through a free and easy to navigate cloud service (CloudManager for Xclaim) which provides quick configuration, monitoring and troubleshooting of small to large networks. Xclaim embeds many Enterprise grade features as standard with no configuration required and when administrator intervention is required, the interface is both simple to use and execute. CloudManager for Xclaim has an adaptive browser interface that will work on any smartphone, tablet, PC or MAC. The Harmony App provides just the base set of features and can be used on any iOS or Android smartphone or tablet.

### A New Way to Wi-Fi

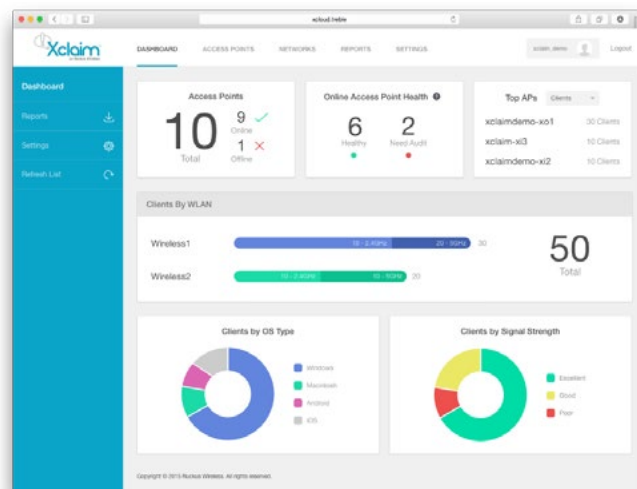
Xclaim makes your WiFi life simple without compromising on the things that matter. Secure, robust, no-nonsense WiFi with the functionality that matters and with an ease of use you will appreciate. All this from a vendor you can trust and at a budget you can afford. Xclaim – a new way to WiFi.

## FEATURES

- Advanced RF design
- Dynamic channel selection (auto)
- Automatic traffic prioritization (auto)
- Airtime Fairness (auto)
- Band Steering (auto)
- Client isolation (per AP)
- 4 SSIDs per radio
- Bandwidth throttling
- Cloud management
- Captive Portal
- 802.1x
- MAC filter support
- Hotspot with Social Login Options\*\*
- Facebook Login\*
- Simple Mesh\*
- Support for external antennas for 5GHz radio

\*available through a free upgrade over the course of 2016

\*\*available through preferred vendors



CloudManager dashboard view

PHYSICAL CHARACTERISTICS	
<b>POWER</b>	<ul style="list-style-type: none"> <li>DC Input: 12 VDC 1.0A</li> <li>Power over Ethernet 802.3 af</li> </ul>
<b>PHYSICAL SIZE</b>	<ul style="list-style-type: none"> <li>13cm (L), 13cm (W), 2.8cm (H)</li> <li>5.1 in (L), 5.1 in (W), 1.1 in (H)</li> </ul>
<b>WEIGHT</b>	<ul style="list-style-type: none"> <li>397 grams (0.875 lbs.)</li> </ul>
<b>ETHERNET PORTS</b>	<ul style="list-style-type: none"> <li>1 auto MDX, auto-sensing 10/100/1000 Mbps, RJ-45, POE port</li> </ul>
<b>LOCK OPTIONS</b>	<ul style="list-style-type: none"> <li>Hidden latching mechanism</li> <li>Kensington Lock Hole</li> <li>T-bar Torx</li> </ul>
<b>ENVIRONMENTAL CONDITIONS</b>	<ul style="list-style-type: none"> <li>Operating Temperature: 0°C - 40°C</li> <li>Operating Humidity: 10% - 95% non-condensing</li> </ul>
<b>POWER DRAW</b>	DC Input <ul style="list-style-type: none"> <li>Idle: 1.6W</li> <li>Typical: 3.6W</li> <li>Peak: 8.4W</li> </ul> Power over Ethernet Input <ul style="list-style-type: none"> <li>Idle: 3.4W</li> <li>Typical: 5.3W</li> <li>Peak: 9.7W</li> </ul>

PERFORMANCE AND CAPACITY	
<b>CONCURRENT STATIONS</b>	<ul style="list-style-type: none"> <li>Up to 100 clients</li> </ul>
<b>MANAGEMENT</b>	
<b>DEPLOYMENT OPTIONS</b>	<ul style="list-style-type: none"> <li>Group or standalone</li> </ul>
<b>CLOUD MANAGEMENT</b>	<ul style="list-style-type: none"> <li>CloudManager for Xclaim</li> <li>Responsive web browser</li> <li>Unlimited AP scaling</li> <li>Multi-site management</li> <li>Remote access</li> </ul>
<b>APP MANAGEMENT</b>	<ul style="list-style-type: none"> <li>Harmony for Xclaim</li> <li>iOS or Android</li> <li>Recommended for networks up to 10 APs</li> <li>Local site management</li> </ul>

WI-FI	
<b>STANDARDS</b>	<ul style="list-style-type: none"> <li>IEEE 802.11a/b/g/n</li> <li>2.4GHz and 5GHz</li> </ul>
<b>SUPPORTED DATA RATES</b>	<ul style="list-style-type: none"> <li>802.11n: 6.5Mbps – 130Mbps (20MHz) 6.5Mbps – 300Mbps (40MHz)</li> <li>802.11a: 54, 48, 36, 24, 18, 12, 9 and 6Mbps</li> <li>802.11b: 11, 5.5, 2 and 1 Mbps</li> <li>802.11g: 54, 48, 36, 24, 18, 12, 9 and 6 Mbps</li> </ul>
<b>AUTO CHANNEL SELECTION</b>	<ul style="list-style-type: none"> <li>Supported</li> </ul>
<b>RF POWER OUTPUT</b>	<ul style="list-style-type: none"> <li>26 dBm for 2.4GHz†</li> <li>24 dBm for 5GHz†</li> </ul>
<b>BSSID</b>	<ul style="list-style-type: none"> <li>Up to 8 (4 per radio)</li> </ul>
<b>POWER SAVE</b>	<ul style="list-style-type: none"> <li>Supported</li> </ul>
<b>WIRELESS SECURITY</b>	<ul style="list-style-type: none"> <li>WPA-PSK, WPA-TKIP, WPA2 AES</li> </ul>
<b>CERTIFICATIONS</b>	<ul style="list-style-type: none"> <li>FCC(US), IC (Canada), CE (European countries)</li> </ul>
<b>ANTENNA</b>	<ul style="list-style-type: none"> <li>Omnidirectional</li> </ul>

† Maximum power varies by country

## Product Ordering Information

MODEL	DESCRIPTION
<b>Xclaim Xi-2 Business Class Wi-Fi Access Point</b>	
<b>AP-Xi-2-XX00</b>	Xclaim Xi-2 Business Class Indoor Wi-Fi Access Point AP-Xi-2-XX00 Xclaim Indoor Single-Band (2.4GHz & 5GHz Selectable) 802.11n Wireless Access Point. 2x2:2 (2 spatial streams). Includes PoE Adapter. For -US00, -EU00 and -UK00 the power cord is included. For -WW00 and -Z200 please order separately the required country power cord at no extra cost.
<b>Optional Accessories</b>	
<b>902-0300-XX00</b>	Power cord for PoE Adapter

PLEASE NOTE: When ordering Xclaim Indoor APs, you must specify the destination region by indicating -US, -Zone 2, or -WW instead of XX. When ordering PoE injectors or power supplies, you must specify the destination region by indicating -US, -EU, -AU, -BR, -CN, -IN, -JP, -KR, -SA, -UK, or -UN instead of -XX.