

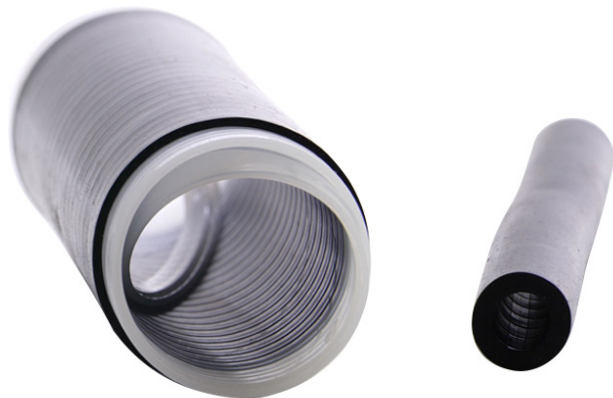
Gamma's SDL cold shrink is a specially formulated pre expanded silicone rubber shrink tube that does not require heat to shrink. It is supplied expanded over an easily removable plastic cylinder. When the plastic cord is pulled, it allows the silicone tubing to shrink rapidly to seal and protect the connector, while gripping tight around the cable.

Cold Shrink has incredible weather protection capabilities while also being amazingly easy to install. On top of being incredibly weather resistant Cold Shrink has the added benefit of creating a strong seal between the connector and the connection point: a seal that helps protect against vibration.

For the past few years AT&T has been utilizing Gamma Electronics' Cold Shrink and has issued CEQ numbers for these products to make the purchasing process on these products even easier for telecommunications professionals.



The Optimal Weather-Proofing Choice



Applications

- Provides Excellent Physical Protection and Moisture Sealing for Telecom Connectors and cables.
- Perfect Application for Remote Radio Unit Connections
- Can be Installed with Less Room than Clam Shell Enclosures Cable Jacket and Sheath Repairs
- Corrosion Protection for Fittings and Couplings
- Protect Connectors from Weather, Moisture, UV, Ozone, Dust and Fungus

Characteristics

- Installation Temperature: -15° F to 158° F Easily Removed with Knife
- Shrink Method: Pull Cord Shrink Ratio: Exceeds 2:1 Colors: Black
- Highly Flexible 15,000 Volt
- Excellent Tear Resistance UV and Ozone Resistant
- Water Tight and Weather Resistant to IP-68 Standard Acid and Alkalis Resistant





Ordering Information for Proper Connector and Cable Protection

Part Number	AT&T	Typical Application	Connector	Cable OD	Cable Type
SDL-DC-152	CEQ.15438	Power Cable Connection	32mm / 1.26"	10.5mm / .42"	Power Cable
SDL-1A-125	CEQ.15437	7/16" DIN	36mm / 1.44"	12mm / .472"	1/2" LCF or Similar
SDL-CX-125	-	4.3-10 Connection	24mm / .95"	6.4mm / .25"	1/4" Coax or Similar
SDL-TN-90	-	Type N Connection	19mm / .75"	10 mm / .40"	LMR 400 or Similar
SDL-TNS-65	-	Round Type N	19mm/.75"	8mm / 5/16"	3/8" Coax or similar



PN: SDL-(DC/1A/CX)-(Length)

125 = 5" Length | 152 = 6" Length | 254 = 10" Length

	7/16 DIN	½ Inch Coax
	4.3-10	¼ Inch Coax
	Type N	LMR 400
	Type N	LMR 195 <small>(with Gamma LMR 195 Only)</small>

RoHS : compliant with EU RoHS Directive (2005/95/EC)

“RoHS Compliant 2005/95/EC” means that the product or part (“Product”) does not contain any of the substances in excess of the maximum concentration values in EU Directive 2002/95/EC, as amended by Commission Decision 2005/618/EC, unless the substance is in an application that is exempt under RoHS. This information represents GAMMA’S knowledge and belief, which may be based in whole or in part on information provided by third party suppliers to GAMMA.

Property of Gamma Electronics Inc.

2818 Metropolitan Place, Suite A
Pomona, CA 91767
www.gammaelectronics.net